



Fisher House, Hillside Park, Sunningdale, Berkshire, SL5

Asking Price £1,325,000 Leasehold (Share of Freehold)

3/4 Bedrooms, 3 Bathrooms (2 en suite), Hall, Sitting room, Dining room, Study/bedroom 4, Kitchen, Breakfast room, Roof terrace, Garage for 2 cars, Lift to flat, Communal gardens.



Description

Hillside Park is an elegant development of apartments, in the Georgian style, set within well maintained gardens on the fringes of Sunningdale, the gardens of which adjoin the Sunningdale Ladies Golf Course. This penthouse apartment is located in probably the best position within the development, being away from through traffic and overlooking the golf course to the rear. The accommodation it provides is generous and all revolves around a central outside terrace. Notable features are the lift directly into the apartment, the well proportioned sitting room and adjoining dining room, each with their gas fires inset and with views over to the golf course. The principle bedroom is a delight, providing a double aspect and a generous, recently fitted, bathroom. Overall, we thoroughly recommend this apartment for its location and access to local facilities, its adaptable accommodation and its presentation.

Outside

Adjoining Sunningdale ladies golf course, a long tarmac driveway winds through the communal gardens, with its sweeping lawns and mature trees, culminating in a turning area and central island. In addition, the apartment has its own central roof

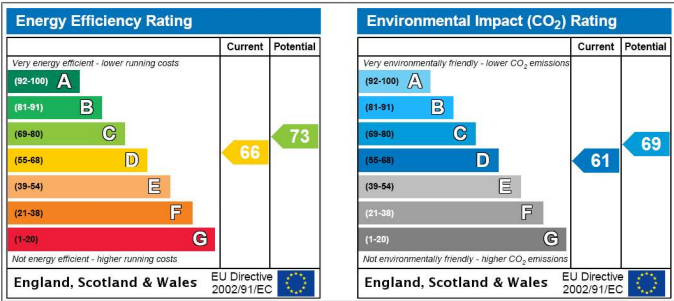
terrace, accessed from 2 sides of the property. The double garage are set away from the development, in a block.

Local Authority

Royal Borough Of Windsor & Maidenhead, 01628 798888

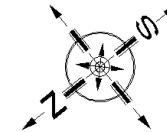
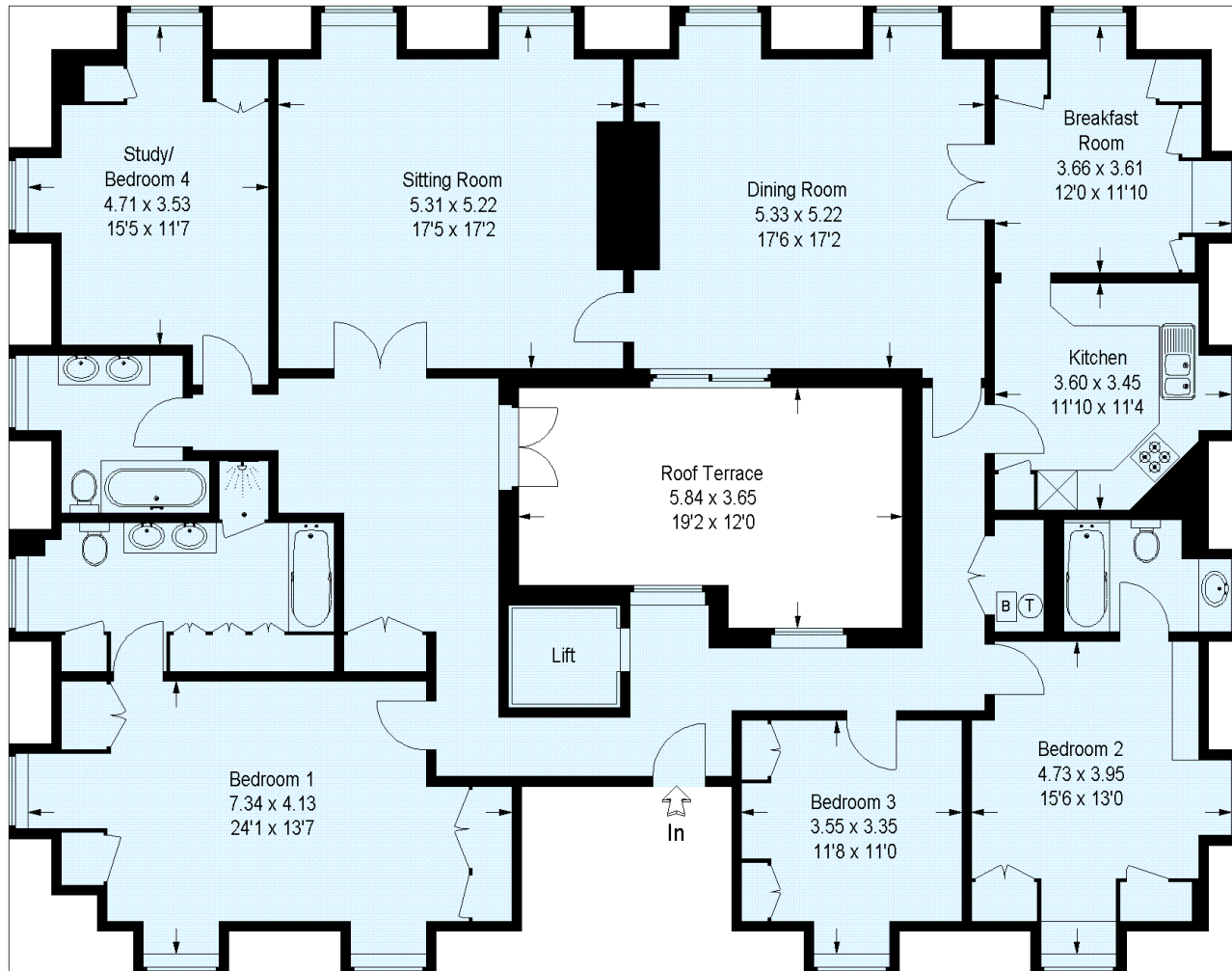
Tenure

Leasehold (Share of Freehold).



Hillside Park, Sunningdale, Berkshire

Approximate Gross Internal Area :-
204 sq m / 2195 sq ft (Excluding Roof Terrace)



FLOORPLANZ © 2011
0845 6344080 Ref 86713

This plan is for layout guidance only.
Not drawn to scale, unless stated.
Windows & door openings are approximate.
Whilst every care is taken in the preparation of this plan, please check all dimensions, shapes & compass bearings before making any decisions reliant upon them.

For clarification, we wish to inform prospective purchasers that we have prepared these sales particulars as a general guide. We have not carried out a detailed survey, nor tested the services, appliances and specific fittings. Room sizes are approximate and rounded: they are taken between internal wall surfaces and therefore include cupboards/shelves, etc. Accordingly, they should not be relied upon for carpets and furnishings. Formal notice is also given that all fixtures and fittings, carpeting, curtains/blinds and kitchen equipment, whether fitted or not, are deemed removable by the vendor unless specifically itemised within these particulars.



Viewing strictly by appointment only.

Hamptons Sunningdale

6 Broomhall Buildings
Chobham Road, Sunningdale, Berkshire, SL5 0DU

Sales. 01344 627555
sunningdale@hamptons-int.com

www.hamptons.co.uk

1302211356

HAMPTONS
INTERNATIONAL